



THE UNIVERSITY OF
SYDNEY

WELCOME PACK

2023 WICC meeting

23-24 October 2023

Sydney, Australia



Version: 12 October 2023

The Venue

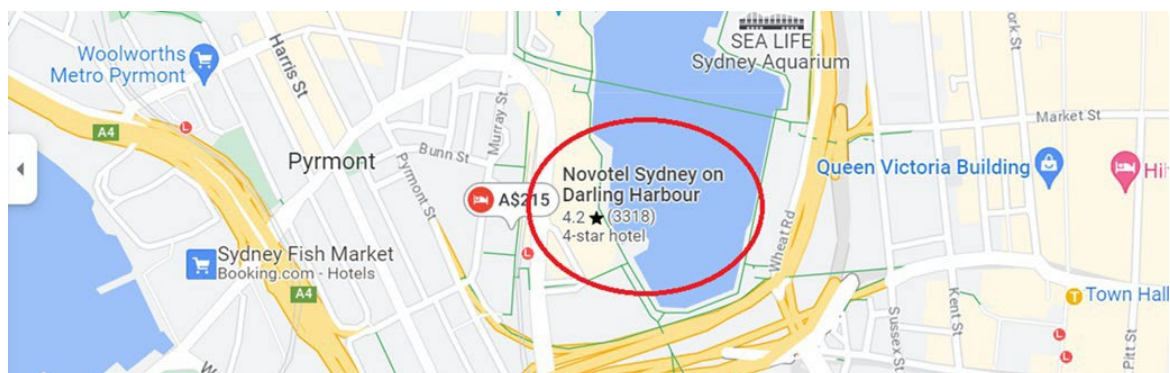
Novotel Sydney On Darling Harbour

On Monday 23 and Tuesday 24 October, the 2023 in-person WICC meeting will be hosted at *the Novotel on Darling Harbour*, located at:

[100 Murray Street Darling Harbour, New South Wales 2000 AUSTRALIA.](#)

The Novotel on Darling Harbour Sydney is a 7-11 minute walk to the International Convention Centre (where the Wonca conference will be held).

Please note: there are 2 Novotel Hotels at Darling Harbour in Sydney. Our meeting is being held at the **Novotel Sydney on Darling Harbour**. (The other Novotel hotel is called the Novotel Sydney Darling Square, we are not meeting at this hotel).



Getting here

Airport and Public Transport

Airport

Sydney International Airport is located 8 kilometres from the Sydney CBD, or a 25-minute drive in light traffic.

Sydney International Airport is also connected to the city by train. The train ride from the International Airport to the city takes 13 minutes.

Trains & Light Rail (tram)

Sydney's public transport system uses refillable Opal cards instead of tickets. These can be purchased from newsagencies and the NSW transport ticket counter within the airport.

Travellers can also 'tap on' using their Amex, Visa, or Mastercard instead of purchasing an Opal Card.



Trains run every 10 minutes from the Sydney International Airport Terminal Train Station to the city. And the light rail runs every 15 minutes from Central Station.

If choosing to use public transport from Sydney airport:

- Take a train from Sydney International Airport to Central Station.
- At Central Station, make your way to the Grand Concourse.
- Take the exit to Pitt Street for the light rail 1.
- At the light rail, put your Opal card or credit card against the Opal card reader to pay for your journey.
- The correct light rail goes in the direction 'to Dulwich Hill'.
- Get off the tram at Convention Centre light rail station. Put your Opal card or credit card against the Opal card reader to end your journey, to make sure you pay the right amount for your trip.
- Keep to the right and head into the car park, turn right and take the lift to level 4. You will see signs to Novotel. Best to walk across to the exit of the car park and turn right, the Novotel will be at your right.

Taxi

There is a designated taxi rank located outside the Sydney International Airport Terminal. The cost of a taxi to the city is approximately AUD\$47 - AUD\$67. No tip is expected.

The below services can be used to pre-book:

13 Cabs

Phone: 13 22 11

[Online](#)

Silver Service Fleet

Phone: 133 100

[Online](#)

Uber

An Uber is approximately AUD\$50 from the airport to the city, depending on your accommodation destination.

Via Airport Shuttle (Door To Door)

You can book a transfer in advance at this link: <https://booking.jayride.com>

Traffic in Australia

In Australia we drive on the left. If you've grown up driving on the other side of the road, just remember that the driver should always be close to the centre of the road. Care is to be taken when getting out of the car and when crossing the road, first look right, then left before crossing.

Electricity/Electrical Plugs



In Australia, the standard plug type is Type I. This plug features a trio of flat pins arranged in a unique triangular configuration. The Australian electrical system operates with a frequency of 50Hz and is designed to accommodate a supply voltage of 240V AC. When performing an electrical power point installation, the capacity of the outlets we use are rated for 10Amps, utilising a secure 3-pin earthed connection, ensuring safety and reliability.

Weather

October is Spring in Australia. In October, the time zone for Sydney is 'Australian Eastern Daylight Savings time'.

Daytime temperatures usually reach 22°C in Sydney in October, falling to 14°C at night, but can also reach 35 degrees. We advise you to have layers of clothing, to accommodate variations in temperature day to day. A light jacket will probably be needed for the evenings.

There are normally 8 hours of bright sunshine each day in Sydney in October - that's 58% of daylight hours.

There are usually 11 days with some rain in Sydney in October and the average monthly rainfall is 91mm.

Sunrise and sunset

Date	Sunrise times	Sunset times
Sunday, 22 nd October 2023	06:06	19:13
Monday, 23 rd October 2023	06:05	19:14
Tuesday, 24 th October 2023	06:03	19:15

WICC 2023 Dinner

The WICC 2023 dinner will take place after the meeting ends on Monday 23 October. The meeting will finish at 6.30pm. We will meet in the hotel foyer at 7pm to walk to a nearby restaurant.

Please contact Julie Gordon (julie.gordon@sydney.edu.au) if you have any specific dietary requirements/allergies.

Things to do in Sydney

Sculpture by the Sea (Bondi, 20 Oct-6 Nov, free event)

Sculpture by the Sea is celebrating its 25th year this year! Walk along the beautiful coastal walkway between the southern end of Bondi Beach and Tamarama and admire more than 100 works of art from Australian and international artists. Up to half a million people are expected to attend over the three weeks. Visitors will be able to explore the exhibition through the official Sculpture by the Sea [app](#) (free to download for Apple and Android; includes an interactive map, catalogue details of all exhibiting artists at each exhibition, photographs, news and award announcements).



Hop on hop off Sydney tour

Visitors can hop on an open-top double decker tour bus and see all of Sydney's top landmarks with the freedom to hop off for that perfect picture! With two routes to experience, visitors can even visit Bondi Beach and the glamorous Eastern Suburbs. Tours have a duration of 1.5 hours and run all day everyday, with varying frequency. Visitors can book themselves through [BigBus Sydney](#) from AUD\$65 for both tours.



Harbour Bridge Climb

Experience Sydney Harbour in an unforgettable way. You won't want to miss the incredible 360° views of Sydney Harbour from 134 metres above sea level. With a range of climbs and times available, there's something for everyone. Book now through [Bridgeclimb Sydney](#).



Pylon Museum Lookout – Harbour Bridge

Discover the history of the world's largest single span steel arch bridge at the Pylon Lookout & Museum. The Pylon Lookout & Museum holds three levels of artefacts and information. Once visitors reach the top they can take in panoramic views of Sydney Harbour, and beyond through the glass view-finder.

The South-East Pylon can be accessed via the Bridge Stairs in The Rocks for AUD\$24.95. Visitors can book through [Pylon Lookout](#).

Sydney Tower Eye

The Sydney Tower Eye offers unrivalled views of the Sydney CBD from 268 metres above sea level. Enjoy the view from the indoor Observation Deck, or walk on air with the 60 minute SKYWALK tour.

Book online through [Sydney Tower Eye](#), tickets are priced from AUD\$89.

The Rocks – Walking tour

Experience the living history and heritage of Australia's first British settlement through a 90 minute leisurely walking tour conducted by The Rocks Walking Tours. Discover the cobbled lanes, hidden courtyards, and the narrow lanes of The Rocks.

Be amazed by stories of the First Fleet 1788, Nurses Walk, the Rum Rebellion 1808, Suez Canal, the Argyle Cut 1840, the plague 1900, the Sydney Harbour Bridge 1920s, the diabolical 1970s plan to demolish The Rocks and the green bans that saved it.

Book your walking tour for AUD\$35 through [The Rocks Walking Tours](#).



Sydney Museums

Art Gallery of New South Wales

Visit the newly reopened Art Gallery of New South Wales and see the once-in-a-generation transformation of a public institution.

Take a walk through art history in the revitalised sandstone neoclassical South Building, featuring works from the 1400s all the way to the 2000s. Then stroll through the art gardens to the North Building, a series of interlocked pavilions that step down through Sydney's parklands. Featuring a spectacular gallery space repurposed from a decommissioned WWII naval oil tank, this is not to be missed when visiting Sydney.

While most exhibitions are free to access, some exhibitions are [subject to purchasing](#) a ticket.

Maritime Museum

Take a deep dive into Australia's rich maritime history at the Australian National Maritime Museum. Located on Darling Harbour next to Pyrmont Bridge, the Museum Precinct extends to the water with historic floating vessels.

Visitors can board historic vessels such as the fully-functioning replica HMB Endeavour identical to Captain Cook's Bark, that landed in Botany Bay in 1770. Exhibits within the museum explore the early history of the European Settlers, as well as the deep connection Indigenous Australian's had with the ocean.

See these stories come to life at the [Australian National Maritime Museum](#).



See Sydney Wildlife

Taronga Zoo

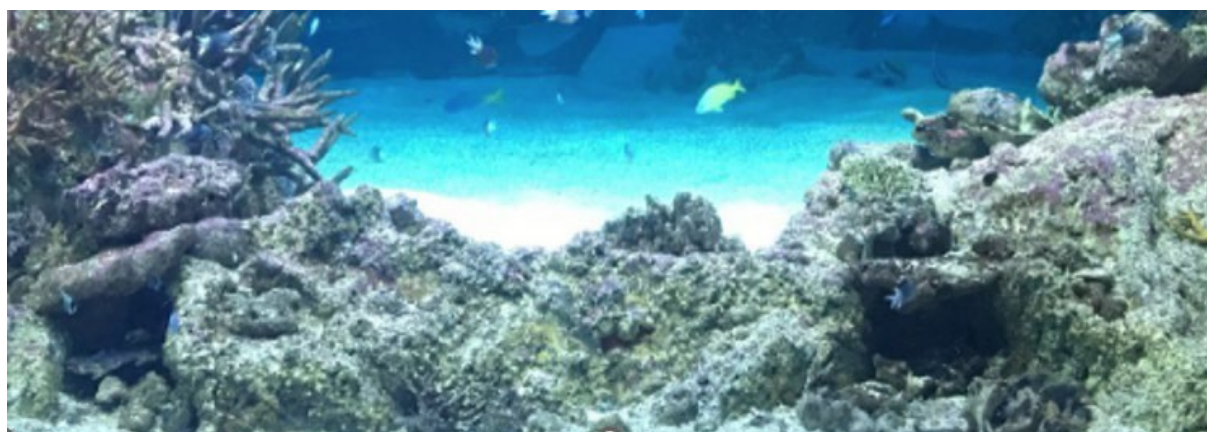
Take a walk on the wild side at Taronga Zoo Sydney! Located in Mosman right on Sydney Harbour, visitors can enjoy a picturesque 12 minute ferry ride to get to the Zoo. Stroll through exhibits featuring Australian Native and exotic animals and get up close and personal in the animal encounter sessions. Watch the Daily Seal Show and QBE Free-Flight Bird Show, where spectacular birds spread their wings against the back drop of Sydney Harbour. Then hop on the Sky Safari, Sydney's only cable car and take in the exhibits from a new perspective.

Book your visit through [Taronga Zoo Sydney](#) for AUD\$45.90.

Sea Life Sydney Aquarium

See sea life in a new way at one of the largest aquariums in the world. SEA LIFE Sydney Aquarium features over 13,000 animals in six million litres of water. Be mesmerised by Shark Valley, an undersea tunnel exhibiting the world's largest variety of sharks and rays, alongside Australia's famed marine animals. With eight other zones to discover, including penguins from Macquarie Island and tropical fish from the Great Barrier Reef, SEA LIFE is an incredible experience right in the heart of Sydney.

Take a journey underwater at [SEA LIFE Sydney Aquarium](#) from AUD\$54.



WICC 2023 Sydney Contact

Dr Julie Gordon

julie.gordon@sydney.edu.au

Phone: + 61 421 200 716